

Router bisa untuk Backup Internet selain WiFi!

Koneksi Internet merupakan hal yang penting bagi Server Pulsa. Koneksi yang stabil dan baik, akan turut melancarkan transaksi pengisian pulsa, baik dari Master Dealer ke Server, maupun transaksi Host To Host (antar server) yang biasanya menggunakan Yahoo Messenger.

Sering kali, kendala terbesar bagi pemain server (terutama yg masih bergantung pada H2H) adalah terputusnya koneksi internet, sehingga transaksi Master Dealer menjadi *terpending* (tidak terproses) dikarenakan pemesanan pulsa yg diterima (misalkan via SMS ke server), tidak dapat di *order* (pesan) ke Host to Host (H2H) via YM.

Anda (pemilik server pulsa), biasanya menggunakan koneksi internet Speedy ataupun Fastnet, dll (colokan RJ45). Tetapi ketika internet utama server anda tidak nyala, maupun mengalami gangguan, maka anda akan mengalami masalah yang berpengaruh pada kualitas pelayanan server pulsa anda juga. Oleh karena itu, biasanya Server Pulsa memiliki backup internet berupa USB Modem (contoh : smart, aha, telkomsel flash, dll). Akan sangat merepotkan jika anda terus menerus mengawasi koneksi server anda (terutama tengah malam, karena server pulsa biasanya beroperasi selama 24jam).

Kini, telah tersedia produk baru berupa Router (pemancar koneksi wireless) dan dapat berfungsi juga sebagai switch (max 4 colokan RJ45) yang dapat meringankan masalah diatas.

TP Link MR3420 yang disediakan oleh Selular88.com dapat anda manfaatkan sebagai backup internet pada server anda.

Router ini mendukung colokan RJ45 (untuk colokan dari speedy, fastnet, dll) dan USB Modem (smart, aha, telkomsel, huawei, dll), sehingga kedua koneksi tersebut dapat bekerja secara bersamaan).



Official Website : <http://www.selular88.com>

Handphone : 0852.8998.3333 / 021.9666.2666

Yahoo Messenger / Email / Facebook : selular88@yahoo.com



Selular88.com menyediakan produk berupa TP Link MR3420 yang dikhususkan untuk Server Pulsa (maupun untuk kegunaan lainnya). TP Link MR3420 dapat memancarkan koneksi WiFi (wireless) yang dapat dikoneksikan dengan banyak device (seperti BlackBerry, Ipad, Iphone, Laptop, Netbook, dll) yang koneksi internetnya dapat berasal dari RJ45 / USB Modem (Speedy maupun Smart, dapat berjalan salah satu, maupun keduanya).



TP Link MR3420 lengkap box Selular88.com

TP Link MR3420 juga mendukung Auto Routing, yang dapat langsung mengalihkan jika ada salah satu koneksi internet yang down (contoh : speedy down, usb modem yg dijalankan), sehingga koneksi internet anda akan lebih terjaga (kualitas transaksi pending karena koneksi internet yang bermasalah dapat berkurang).

*melayani pengiriman ke seluruh Indonesia (kota besar dan kota kecil) melalui JNE
*Selular88.com | Grosir Handphone dan Peralatan Server Pulsa

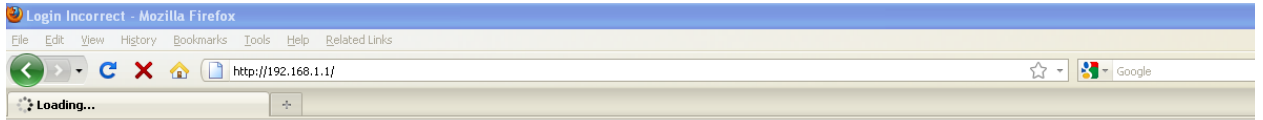
TP-LINK® 3G Wireless N Router
Model No. TL-MR3420

Status	<h3>Internet Access</h3> <p>The router provides four Internet access mode for you to choose:</p> <p><input type="radio"/> 3G Preferred - Use 3G as the primary access, WAN as a backup.</p> <p><input checked="" type="radio"/> 3G Only - Only use 3G as the access to the Internet.</p> <p><input type="radio"/> WAN Preferred - Use WAN as the primary access, 3G as a backup.</p> <p><input type="radio"/> WAN Only - Only use WAN as the access to the Internet.</p> <p style="text-align: center;"><input type="button" value="Save"/></p>	<h3>Internet Access Help</h3> <p>You can select the Internet Access on this page. The router is designed to work with either WAN port or 3G USB modem, and supports automatically take over back up with 3G access as Ethernet/WAN failover.</p> <p>3G Preferred In this mode, the router will try 3G access first, When 3G access fails and WAN access is valid, or when no 3G USB modem is inserted, the router would switch to WAN access; When the router succeeds to connect to the 3G network, the router would stop the WAN connection and switch back to 3G access immediately.</p> <p>3G Only In this mode, the router will try 3G access only. WAN access is disabled.</p> <p>WAN Preferred In this mode, the router will try WAN access first, When the WAN access fails, and 3G access is valid, the router would switch to 3G access; When the router succeeds to connect to the WAN network, the router would stop the 3G connection and switch back to WAN access immediately.</p> <p>WAN Only In this mode, the router will try WAN access only. 3G access is disabled.</p> <p>Note:</p> <ol style="list-style-type: none">1. If you are using the 3G Preferred or WAN Preferred, the router would connect, disconnect or switch the current access automatically. The Connect/Disconnect button(on 3G, PPPoE, PPTP, L2TP) and some related parameters could not be set manually.2. Only when the WAN connection is Dynamic IP, Static IP or PPPoE can the router support the switch between 3G mode and WAN mode. <p>Click the Save button to save your settings.</p>
Quick Setup		
QSS		
Network		
- Internet Access		
- 3G		
- WAN		
- MAC Clone		
- LAN		
Wireless		
DHCP		
Forwarding		
Security		
Parental Control		
Access Control		
Static Routing		
Bandwidth Control		
IP & MAC Binding		
Dynamic DNS		
System Tools		

Setting Backup Internet pada TP-LINK MR3420

Berikut adalah langkah tutorial Setting Mikrotik untuk Router TP-Link MR3420 (selular88.com) :

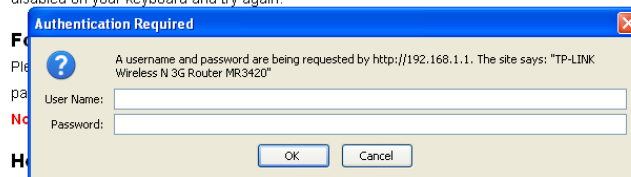
1. Akses Halaman : <http://192.168.1.1> (setelah pemasangan router anda benar, sesuai dengan panduan manual pada router)



Username or Password is incorrect. Please refer to the troubleshooting below:

Is the "Caps Lock" enabled on your keyboard?

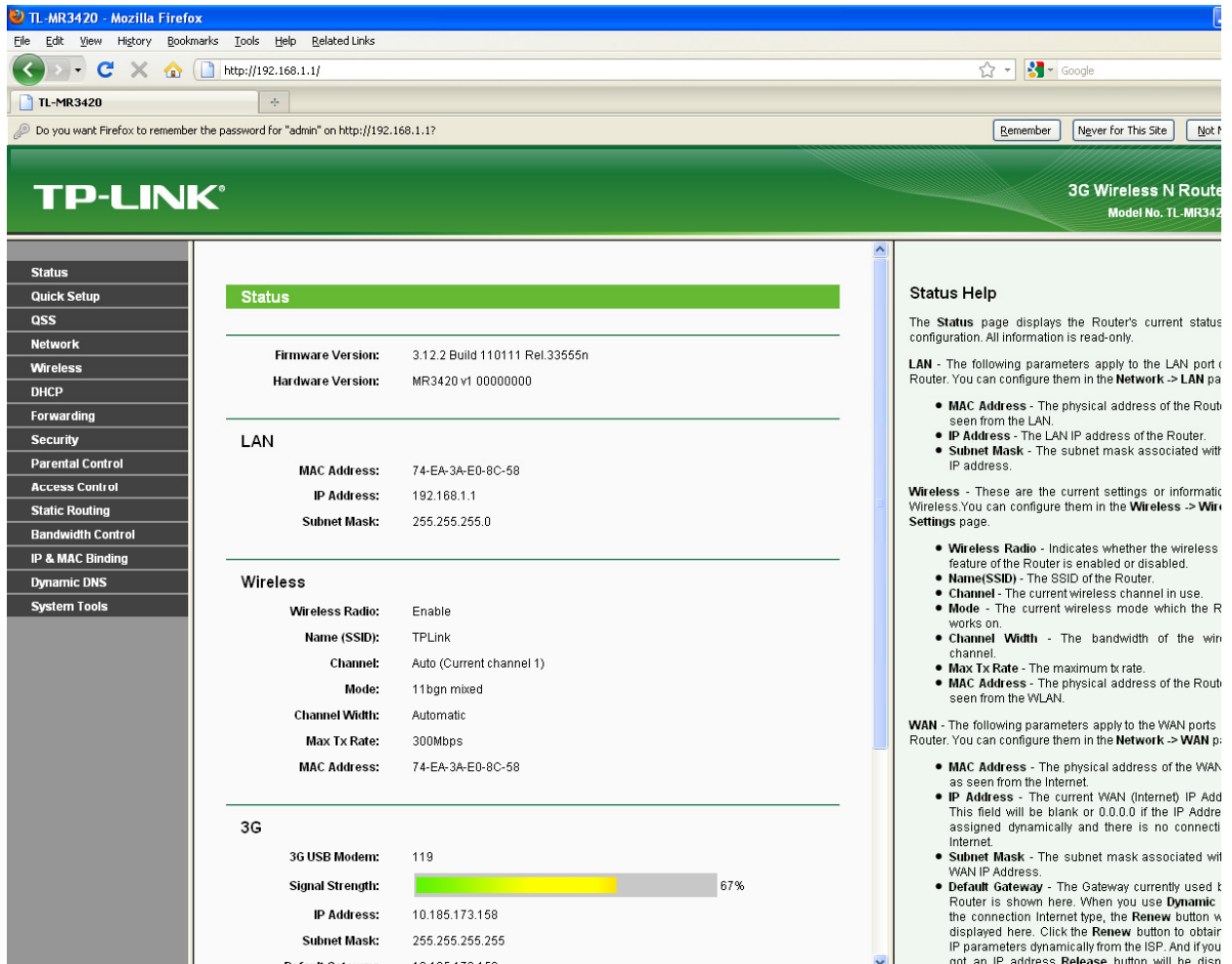
The username and password must be lowercase, please ensure that the "Caps Lock" LED is disabled on your keyboard and try again.



Firstly locate the reset button on the rear panel of the unit, whilst the device is powered on press and hold the **reset** button for more than 5 seconds, the device will then reboot and restore itself to the factory default settings.

Login Page Utama Mikrotik

2. Masukkan Username : *admin* dan Password : *admin* (standar password, bisa anda ganti setelah login)



The screenshot shows the web interface of a TP-LINK MR3420 3G Wireless N Router. The browser is Mozilla Firefox, and the URL is http://192.168.1.1/. The page title is "TP-LINK® 3G Wireless N Router Model No. TL-MR3420".

Status

Firmware Version: 3.12.2 Build 110111 Rel.33555n
Hardware Version: MR3420 v1 00000000

LAN

MAC Address: 74-EA-3A-E0-8C-58
IP Address: 192.168.1.1
Subnet Mask: 255.255.255.0

Wireless

Wireless Radio: Enable
Name (SSID): TPLink
Channel: Auto (Current channel 1)
Mode: 11bgn mixed
Channel Width: Automatic
Max Tx Rate: 300Mbps
MAC Address: 74-EA-3A-E0-8C-58

3G

3G USB Modem: 119
Signal Strength: 67%
IP Address: 10.185.173.158
Subnet Mask: 255.255.255.255
Default Gateway: 10.185.173.150

Status Help

The **Status** page displays the Router's current status configuration. All information is read-only.

LAN - The following parameters apply to the LAN port of the Router. You can configure them in the **Network -> LAN** page.

- **MAC Address** - The physical address of the Router as seen from the LAN.
- **IP Address** - The LAN IP address of the Router.
- **Subnet Mask** - The subnet mask associated with the IP address.

Wireless - These are the current settings or information of the Router. You can configure them in the **Wireless -> Wireless** page.

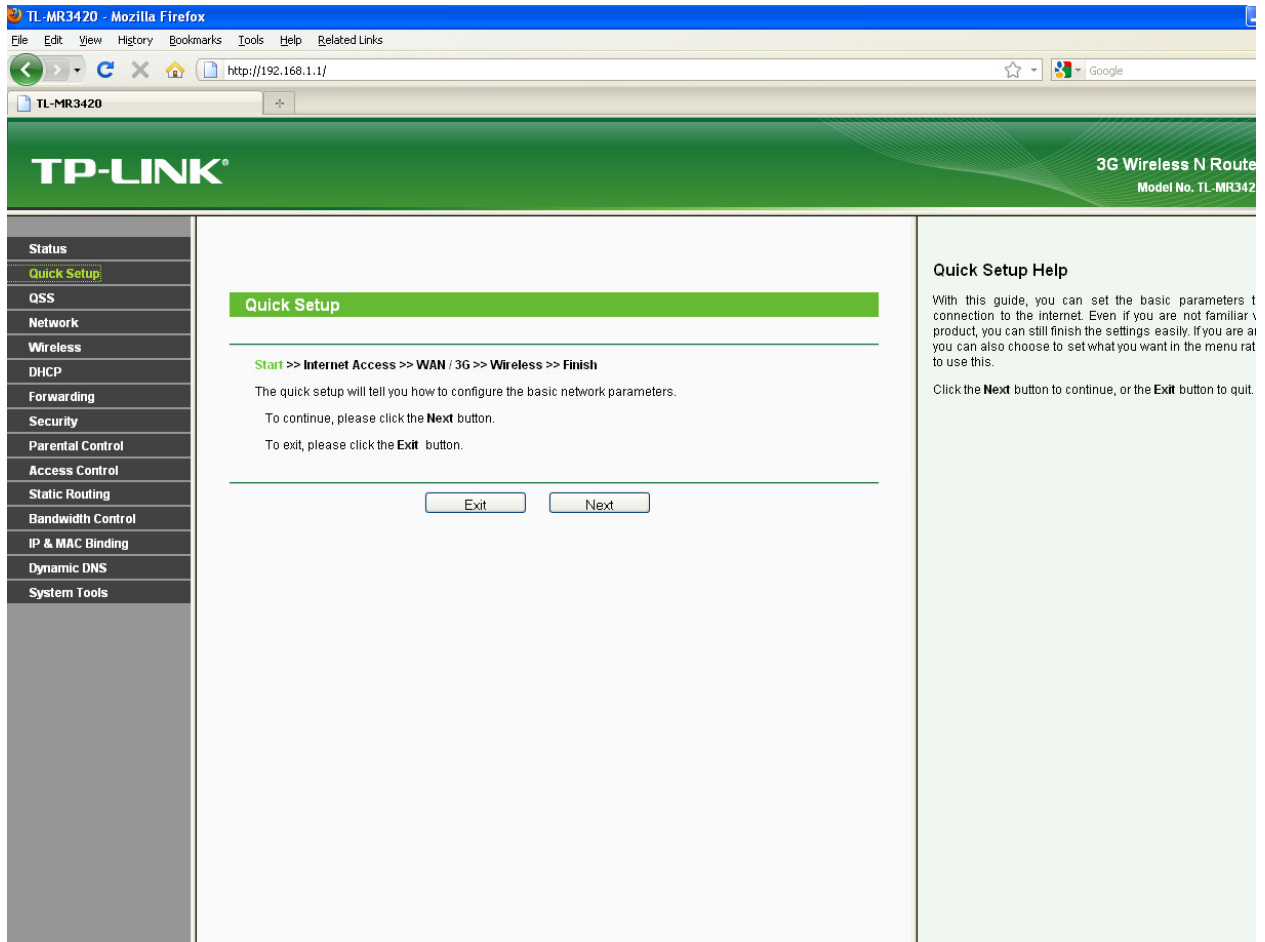
- **Wireless Radio** - Indicates whether the wireless feature of the Router is enabled or disabled.
- **Name(SSID)** - The SSID of the Router.
- **Channel** - The current wireless channel in use.
- **Mode** - The current wireless mode which the Router works on.
- **Channel Width** - The bandwidth of the wireless channel.
- **Max Tx Rate** - The maximum transmit rate.
- **MAC Address** - The physical address of the Router as seen from the WLAN.

WAN - The following parameters apply to the WAN ports of the Router. You can configure them in the **Network -> WAN** page.

- **MAC Address** - The physical address of the WAN port as seen from the Internet.
- **IP Address** - The current WAN (Internet) IP Address. This field will be blank or 0.0.0.0 if the IP Address is assigned dynamically and there is no connection to the Internet.
- **Subnet Mask** - The subnet mask associated with the WAN IP Address.
- **Default Gateway** - The Gateway currently used by the Router is shown here. When you use **Dynamic** connection Internet type, the **Renew** button will be displayed here. Click the **Renew** button to obtain IP parameters dynamically from the ISP. And if you do not get an IP address, the **Release** button will be displayed.

Status Koneksi Router TP-LINK MR3420 (Mikrotik)

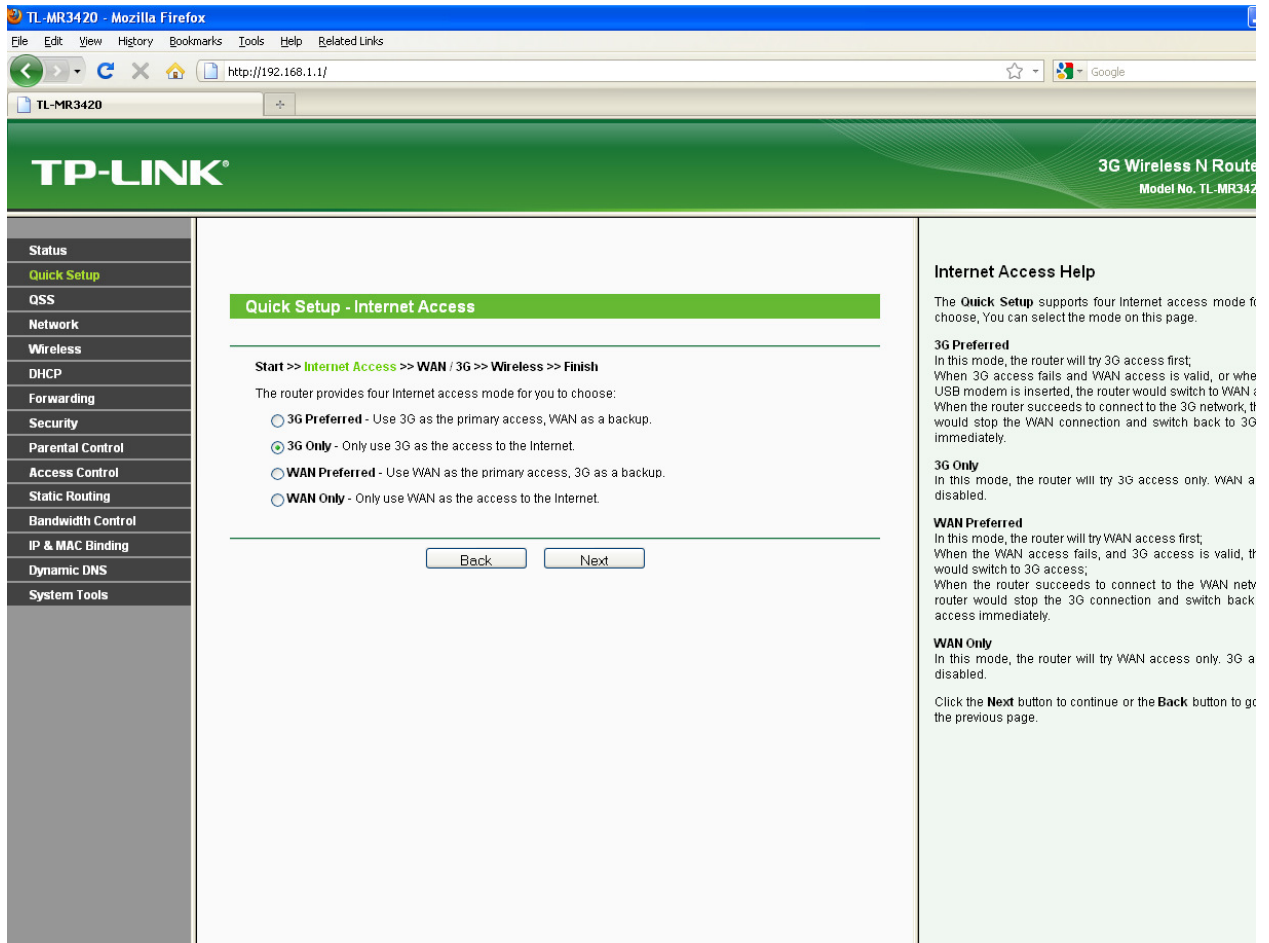
3. Masuk ke Menu **Quick Setup** (bagian sidebar kiri), kemudian tekan tombol Next



Quick Setup Menu

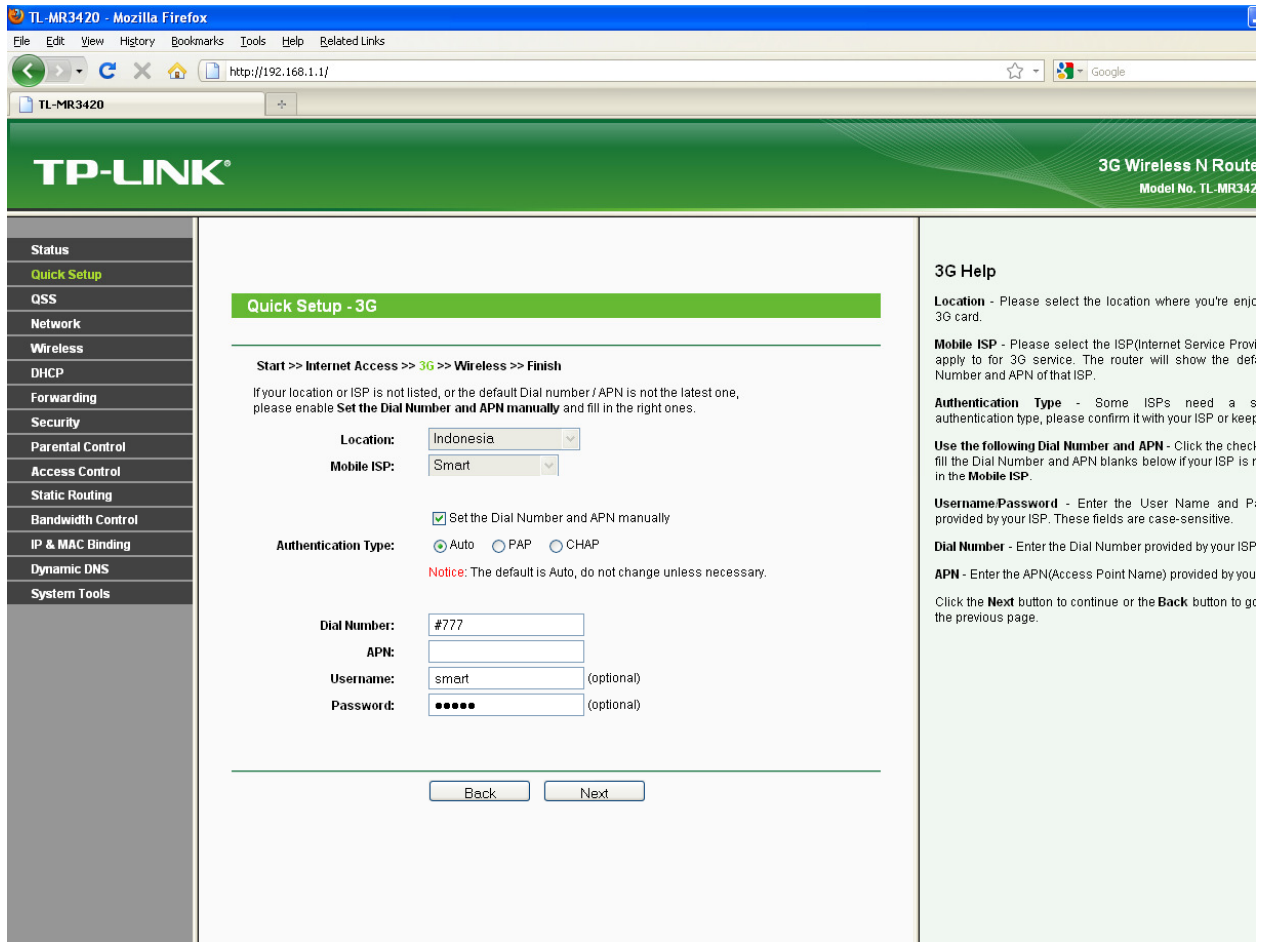
4. Setting koneksi anda sbb :

- **3G Preferred** : untuk pengaturan koneksi utama anda berupa USB Modem 3G, kemudian WAN sebagai backup (cadangan)
- **3G Only** : jika anda hanya menggunakan USB modem sebagai koneksi internet anda
- **WAN Preferred** : untuk pengaturan koneksi utama anda berupa WAN, kemudian USB Modem 3G sebagai backup (cadangan)
- **WAN Only** : jika anda hanya menggunakan WAN sebagai koneksi internet anda



Setting Pilihan Koneksi

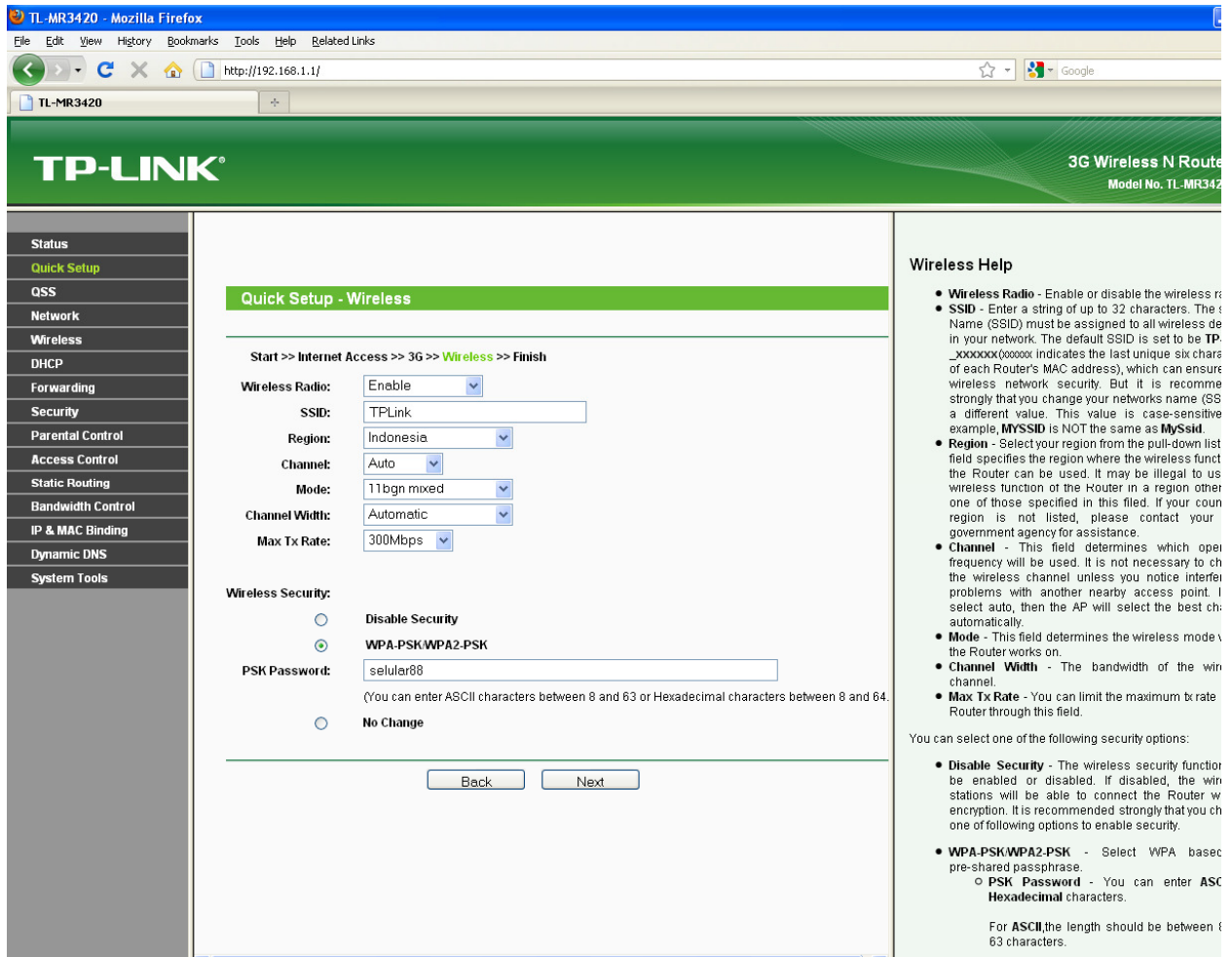
5. Saya memilih **3G Only** (karena hanya memakai modem smart) , kemudian Click Next



The screenshot shows the TP-Link MR3420 Quick Setup - 3G page in a Mozilla Firefox browser. The page title is "Quick Setup - 3G". The breadcrumb trail is "Start >> Internet Access >> 3G >> Wireless >> Finish". A note states: "If your location or ISP is not listed, or the default Dial number / APN is not the latest one, please enable **Set the Dial Number and APN manually** and fill in the right ones." The form fields are: Location (Indonesia), Mobile ISP (Smart), Authentication Type (Auto selected, with checkboxes for PAP and CHAP), Dial Number (#777), APN (empty), Username (smart), and Password (masked with dots). A "Notice" says: "The default is Auto, do not change unless necessary." At the bottom are "Back" and "Next" buttons. A sidebar on the left lists navigation options like Status, Quick Setup, QSS, Network, Wireless, DHCP, Forwarding, Security, Parental Control, Access Control, Static Routing, Bandwidth Control, IP & MAC Binding, Dynamic DNS, and System Tools. A "3G Help" section on the right provides instructions for Location, Mobile ISP, Authentication Type, Username/Password, Dial Number, and APN.

Setting USB Modem ke Router (Wifi)

6. Setting Wireless (WiFi) yang menggunakan sumber dari USB Modem Smart, kemudian Click Next



TP-LINK® 3G Wireless N Router
Model No. TL-MR3420

Quick Setup - Wireless

Start >> Internet Access >> 3G >> **Wireless** >> Finish

Wireless Radio: Enable

SSID: TPLink

Region: Indonesia

Channel: Auto

Mode: 11bgn mixed

Channel Width: Automatic

Max Tx Rate: 300Mbps

Wireless Security:

Disable Security

WPA-PSK/WPA2-PSK

PSK Password: selular88

(You can enter ASCII characters between 8 and 63 or Hexadecimal characters between 8 and 64.)

No Change

Back Next

Wireless Help

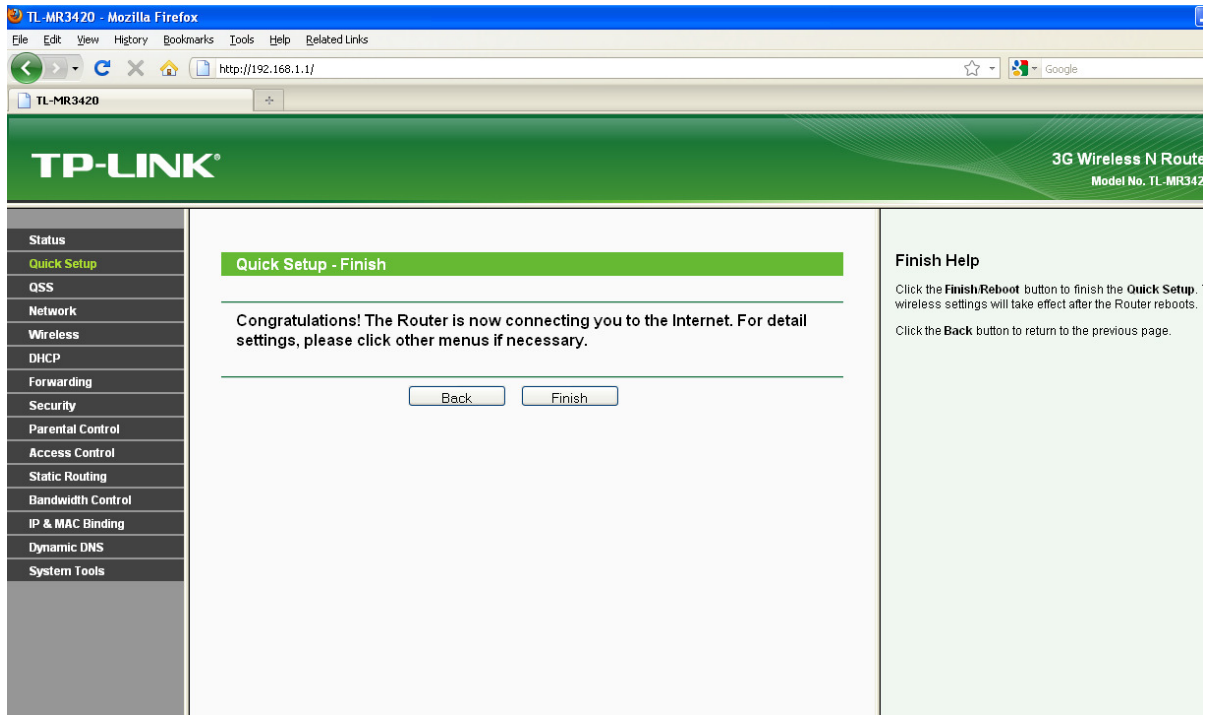
- **Wireless Radio** - Enable or disable the wireless radio.
- **SSID** - Enter a string of up to 32 characters. The SSID Name (SSID) must be assigned to all wireless devices in your network. The default SSID is set to be TP-Link. The last six characters (xxxxxx) indicates the last unique six characters of each Router's MAC address, which can ensure wireless network security. But it is recommended strongly that you change your network name (SSID) to a different value. This value is case-sensitive. For example, MYSSID is NOT the same as myssid.
- **Region** - Select your region from the pull-down list. This field specifies the region where the wireless function of the Router can be used. It may be illegal to use wireless function of the Router in a region other than one of those specified in this field. If your country is not listed, please contact your government agency for assistance.
- **Channel** - This field determines which operating frequency will be used. It is not necessary to change the wireless channel unless you notice interference problems with another nearby access point. If you select auto, then the AP will select the best channel automatically.
- **Mode** - This field determines the wireless mode the Router works on.
- **Channel Width** - The bandwidth of the wireless channel.
- **Max Tx Rate** - You can limit the maximum transmit rate of the Router through this field.

You can select one of the following security options:

- **Disable Security** - The wireless security function will be disabled. If disabled, the wireless stations will be able to connect to the Router without encryption. It is recommended strongly that you choose one of the following options to enable security.
- **WPA-PSK/WPA2-PSK** - Select WPA based on a pre-shared passphrase.
 - **PSK Password** - You can enter ASCII characters between 8 and 63 or Hexadecimal characters between 8 and 64. For ASCII, the length should be between 8 and 63 characters.

Setting Wireless Security

7. Selesai, kini pada wilayah anda telah terpancar jaringan WiFi yg berasal dari USB Modem anda (bisa smart, aha, dll).



Finish

Router ini bukan hanya untuk memancarkan jaringan wifi, tetapi dapat juga sebagai backup internet (seperti pilihan pada langkah 4 diatas).

Router ini juga dapat berfungsi seperti switch (menghubungkan koneksi antar PC).

Informasi Selengkapnya di TP Link Resmi :

<http://www.tp-link.com/en/products/prodetail.aspx?mid=0103030201&id=377>

Support Modem : http://www.tp-link.com/common/subject/3g_router/compatible/list/

Untuk pemesanan Router ini, anda dapat menghubungi Contact sbb :

YM / FB / Twitter / Email : selular88@yahoo.com

SMS : 0852.8998.3333

Call : 021.9666.2666

Official Website : <http://www.selular88.com>

Terima Kasih, semoga bermanfaat

*melayani pengiriman ke seluruh Indonesia (kota besar dan kota kecil) melalui JNE
*Selular88.com | Grosir Handphone dan Peralatan Server Pulsa